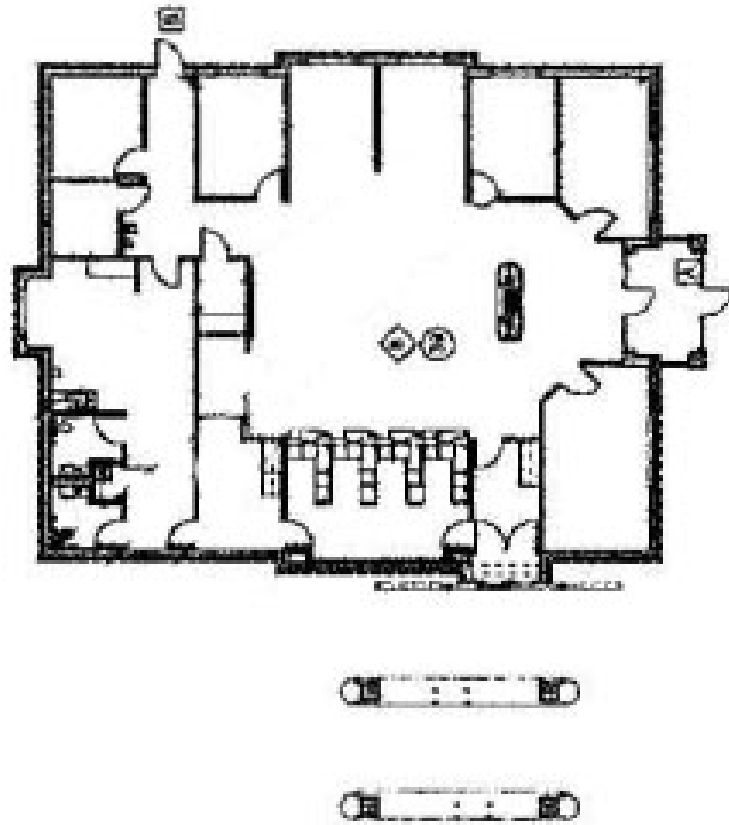
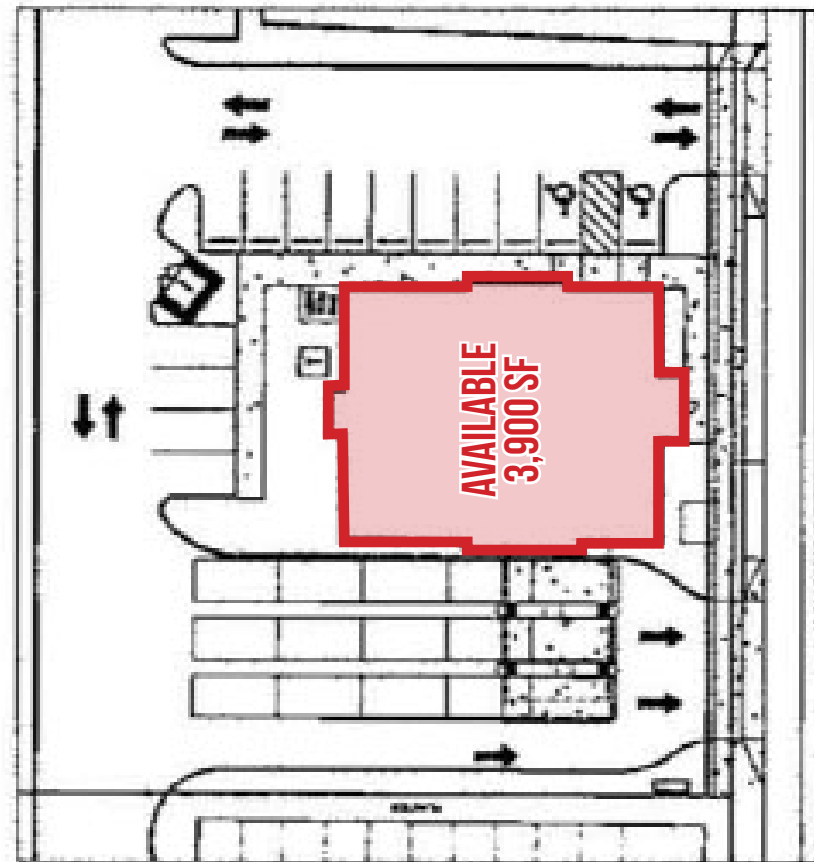


SITE PLAN / 148TH & DIVISION



FIRST FLOOR – BUILDING KEY PLAN:
SCALE NOT TO SCALE



CIVIL DRAWINGS FOR DETAILED SITE PLAN
SITE KEY PLAN:
SCALE NOT TO SCALE



LOCATION 14701 SE Division Street in Portland, Oregon 97233

AVAILABLE SPACE 3,900 SF

RENTAL RATE Call for details

- COMMENTS**
- Located directly north of the Division Fred Meyer store
 - Includes three drive-up lanes
 - Lease expiration 9/30/2027

TRAFFIC COUNT SE Division Street SE – 41,025 ADT (14) / 148th Street – 10,583 ADT (10)

DEMOGRAPHICS	1 MILE	3 MILE	5 MILE
Est. Population	25,493	173,478	366,944
Population Forecast 2022	27,032	186,205	393,939
Average HH Income	\$51,920	\$56,675	\$65,080
Employees	2,311	38,601	108,522

Source: Regis - SitesUSA (2017)

ALEX MACLEAN
alex@cra-nw.com
503.595.7563

Commercial Realty Advisors NW, LLC
733 SW Second Avenue, Suite 200
Portland, Oregon 97204
www.cra-nw.com
Licensed brokers in Oregon & Washington



EASTSIDE PORTLAND, OREGON

